



12d Synergy Client Installation Guide

Version 3.0

April 2017



12d Solutions Pty Ltd

ACN 101 351 991

PO Box 351 Narrabeen NSW Australia 2101

☎ (02) 9970 7117 📠 (02) 9970 7118

✉ support@12d.com 🌐 www.12d.com



12d Synergy Client Installation Manual

V3.0 April 17

Disclaimer

12d Synergy is supplied without any express or implied warranties whatsoever.

No warranty of fitness for a particular purpose is offered.

No liabilities in respect of engineering details and quantities produced by 12d Synergy are accepted.

While every effort has been taken to ensure that the advice given in this manual and the program 12d Synergy is correct, no warranty is expressed or implied by 12d Solutions Pty Ltd.

Copyright

This manual is copyrighted and all rights reserved.

This manual may not, in whole or part, be copied or reproduced without the prior consent in writing from 12d Solutions Pty Ltd.

Copies of 12d Synergy software must not be released to any party, or used for bureau applications without the written permission of 12d Solutions Pty Ltd.

Copyright © 1989 – 2017 by 12d Solutions Pty Ltd.
Sydney, New South Wales, Australia.
ACN 101 351 991
All rights reserved.



Table of Contents

1.0	INSTALLING THE 12D SYNERGY CLIENT	1
1.1	Requirements	1
1.2	Required Components	1
1.3	32 bit or 64 bit Platforms	1
1.4	The 12d Synergy Workspace	1
2.0	PERFORMING THE INSTALLATION	2
2.1	Welcome to the 12d Synergy Client Installation	2
2.2	End User License Agreement	3
2.3	Select Components	3
2.4	Pick Installation Location	4
2.5	Select 12d Synergy Workspace	5
2.6	Configure the 12d Synergy Server Database	Bookmark '_Toc384716308' is not defined
2.7	Performing Installation	6
3.0	SILENT INSTALLATIONS	7
3.1	Generating an Answers File	7
3.2	Performing a Silent Installation	7



1.0 INSTALLING THE 12D SYNERGY CLIENT

Please read this document carefully before installing the 12d Synergy client.

1.1 Requirements

The .NET 4.5 must be installed before starting the installation.

1.2 Required Components

The 12d Synergy client contains several components.

Component	Description
12d Synergy Client	The 12d Synergy client – this must always be installed. This also includes the 12d Model integration plugin.
12d Synergy Administration	An administrative program for configuring settings on the server which can only be used by administrators
Microsoft Word 2010 Plugin	The Microsoft Word 2010 Plugin is used to provide a toolbar in Microsoft Word (2010 and later) for communicating directly with 12d Synergy
Microsoft Excel 2010 Plugin	The Microsoft Excel 2010 Plugin is used to provide a toolbar in Microsoft Excel (2010 and later) for communicating directly with 12d Synergy
Microsoft Outlook 2010 Plugin	The Microsoft Outlook 2010 Plugin is used to provide a toolbar in Microsoft Outlook (2010 and later) for communicating directly with 12d Synergy
CAD Plugin	The CAD plugin provides a menu and a set of commands to be used in BricsCAD and AutoCAD to communicate with 12d Synergy directly.

1.3 32 bit or 64 bit Platforms

There are two published platform versions of the client; either the 32 or 64 bit platform versions. It is important that the platform of the client you install matches with the platform of the products you wish to use plugins for.

For example,

If you use the 32 bit version of Office and wish to use any of the office plugins, you must install the 32 bit version of 12d Synergy

If you use the 64 bit version of 12d Model, you must install the 64 bit version of 12d Synergy.

Note that you can install both 32 and 64 bit versions to suit your needs.

1.4 The 12d Synergy Workspace

12d Synergy operates within a set of local folders called a 'workspace'. Temporary copies and latest versions will be saved here. Once the workspace is set, it cannot be changed without removing the local database.

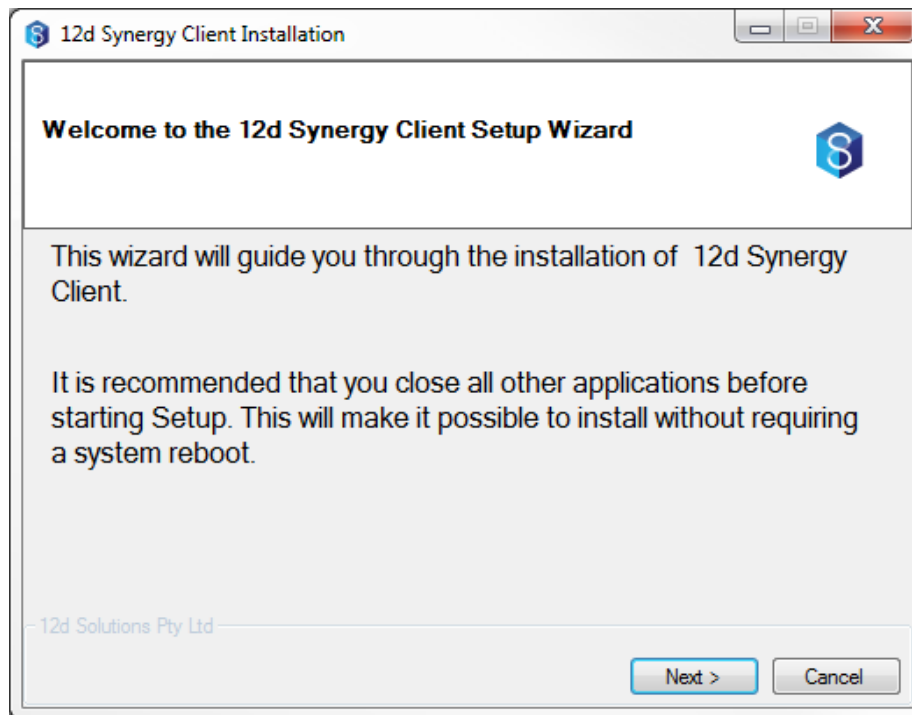
An IT administrator can enforce the location of the workspace by setting the windows environment variable, 12dSynergyWorkspaceRoot



2.0 PERFORMING THE INSTALLATION

The installation is started by running the 12dSynergy_Client_x86.exe or 12dSynergy_Client_x64.exe, depending on your 32 bit or 64 bit needs.

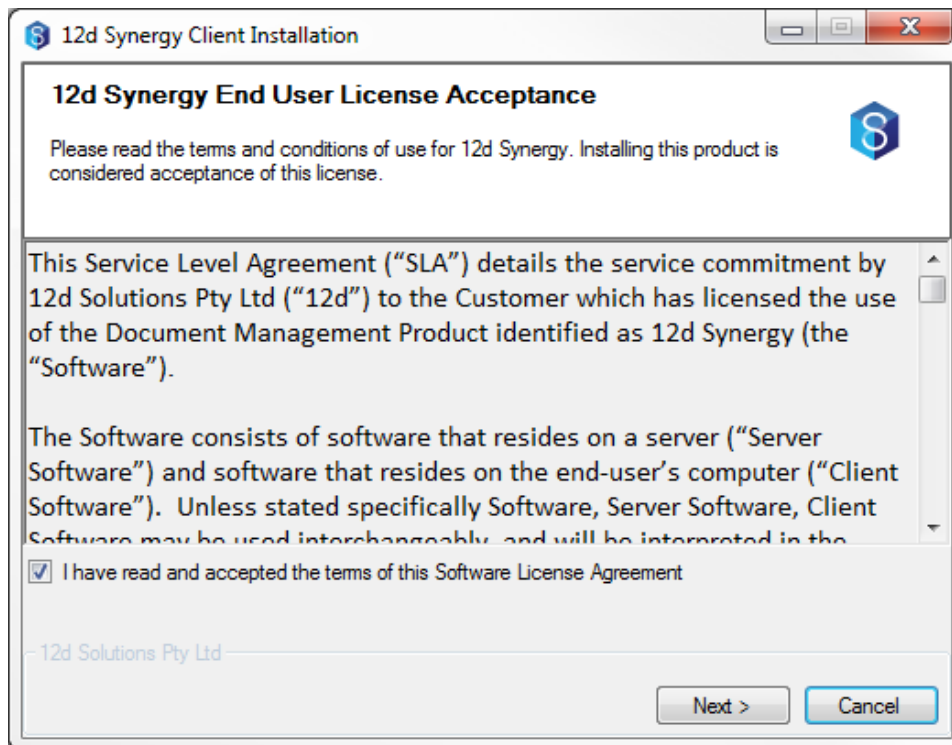
2.1 Welcome to the 12d Synergy Client Installation



This is the welcome page. Click next to continue.

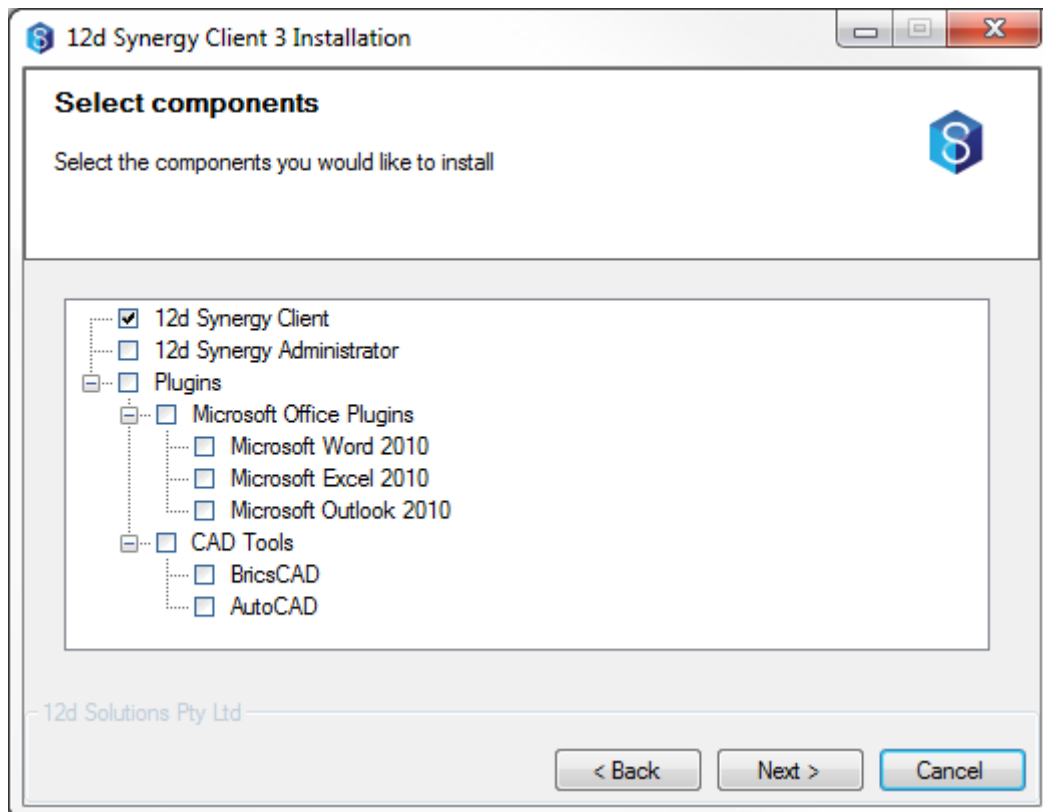


2.2 End User License Agreement



To install 12d Synergy, you must accept the license agreement before clicking 'Next'

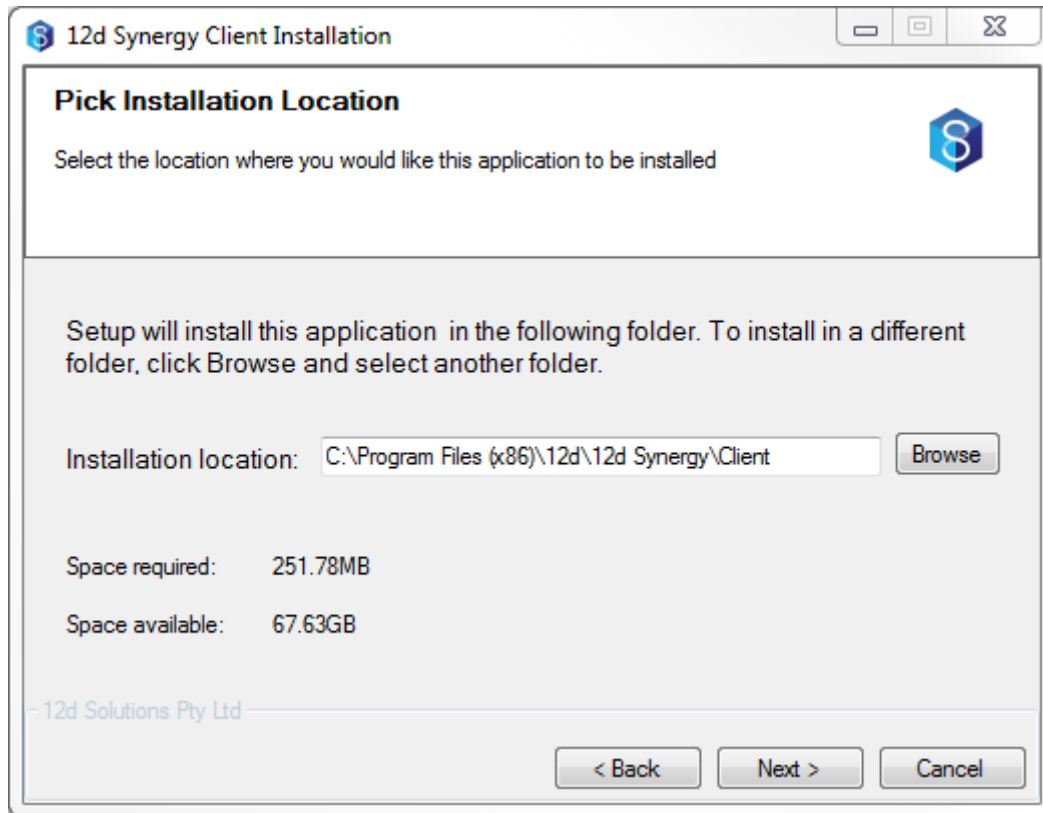
2.3 Select Components



Select the components you wish to install. Note that 12d Synergy Client is already selected and is a requirement. If you wish to install the Office plugins, please make sure all Office products are closed.



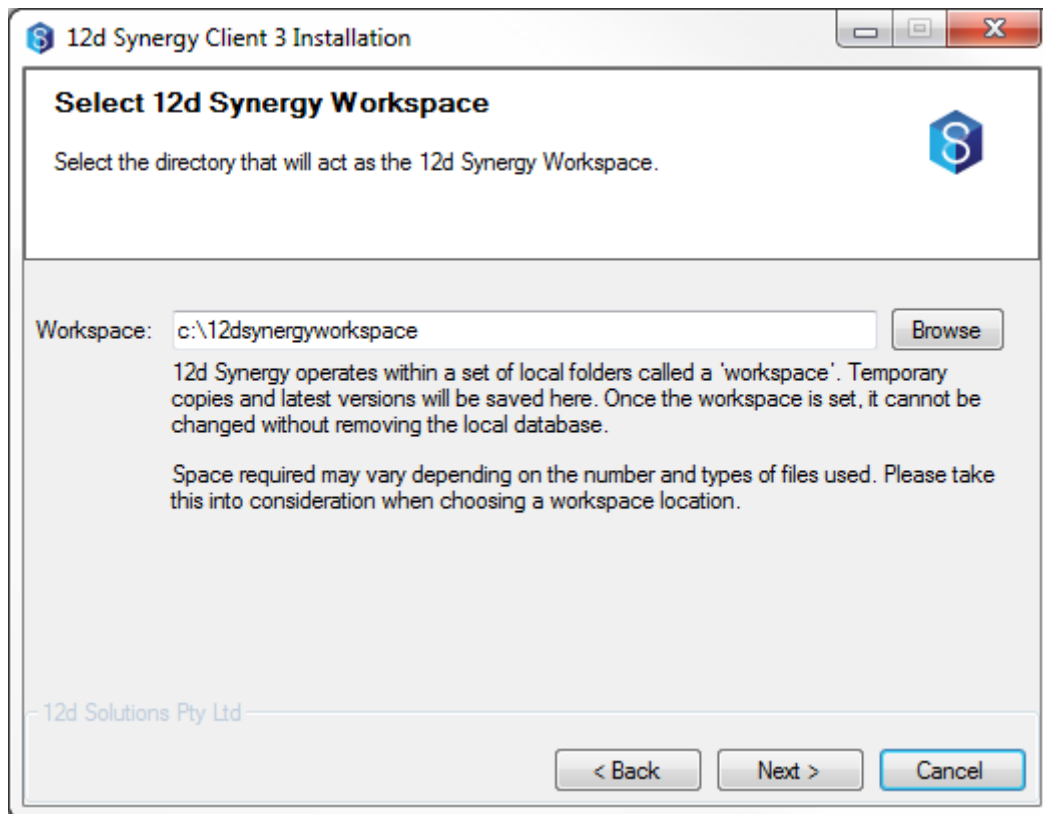
2.4 Pick Installation Location



Choose the installation location – it is recommended this is left as the default pre-defined setting. Click next when you have selected the location to install to.



2.5 Select 12d Synergy Workspace



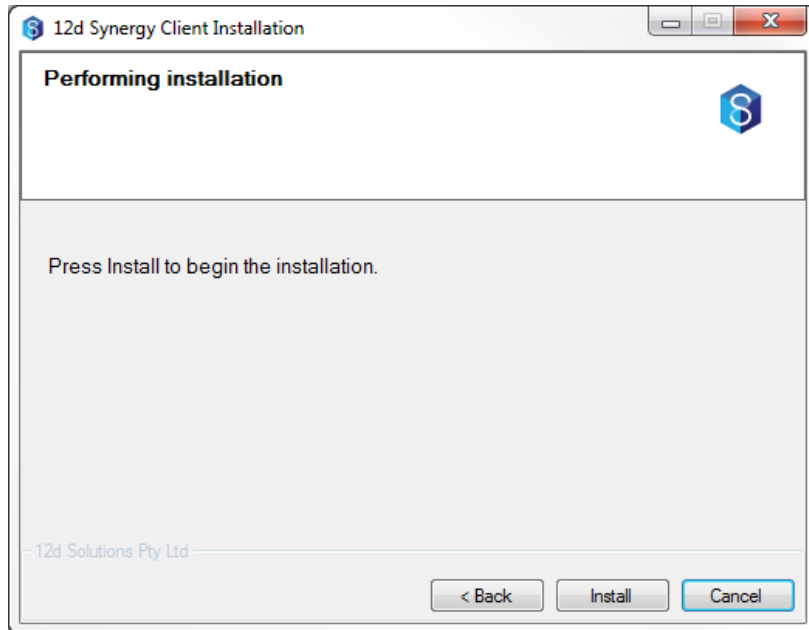
Browse to the location of the 12d Synergy Workspace. If you are reinstalling, this will already be set to the previously used setting.

12d Synergy operates within a set of local folders called a 'workspace'. Temporary copies and latest versions will be saved here. Once the workspace is set, it cannot be changed without removing the local database.

Space required may vary depending on the number and types of files used. Please takes this into consideration when choosing a workspace location.



2.6 Performing Installation



You are now ready to perform the installation. Click install to begin.



3.0 SILENT INSTALLATIONS

The 12d Solutions Installer is capable of performing silent installers, which may assist in automatic rollouts of upgrades.

3.1 Generating an Answers File

To perform a silent installation, you will need to generate an answers file.

To do so, provide the following argument:

-o PathToAnswersFile

For example,

```
12dSynergy_Client_x86.exe -o c:\temp\answers.txt
```

When the installation is completed, an answers file will be generated for use time.

Note: If you are using the PDF version of this information, a Unicode character may be copied to the Windows Command Line, which is not Unicode aware. This may cause this command line to fail to run. Consider typing this information in by hand.

3.2 Performing a Silent Installation

To perform a silent installation, specify the following arguments on the command line:

```
-gm2 -m silent -a PathToAnswersFile
```

If you would like to also automatically uninstall the product first, use these arguments

```
-gm2 -m silent -u -a PathToAnswersFile
```

For example,

```
12dSynergy_Client_x86.exe -gm2 -m silent -u -a c:\temp\answers.txt
```

Note: If you are using the PDF version of this information, a Unicode character may be copied to the Windows Command Line, which is not Unicode aware. This may cause this command line to fail to run. Consider typing this information in by hand.

4.0 MANUAL STEPS

4.1 AutoCAD plugin

If you opted to install the AutoCAD plugin, you will need to install the user interface manually.

To do so, simply start AutoCAD and run the command CUILOAD

Navigate to the application data\12dSynergy folder (%appdata%\12dSynergy) and select the 12dSynergy.CUI file.

AutoCAD will now load the 12d Synergy menu each time.

4.2 BricsCAD plugin

If you opted to install the BricsCAD plugin and you are using a version earlier than v14, you will need to install the user interface manually.

